



INFLUENCE WITH INTEGRITY

# Wentworth Poll

19-21 April 2022

# Contents

<b>1</b>	<b>Methodology</b>	<b>2</b>
<b>2</b>	<b>Voting Intentions</b>	<b>3</b>
2.1	Vote Intention . . . . .	4
2.2	Lean of Unsure or Another Minor Party Voters . . . . .	6
<b>3</b>	<b>Important Issues</b>	<b>7</b>
3.3	Vote Determining Issues . . . . .	8
<b>4</b>	<b>LGBTQ+ Rights</b>	<b>11</b>
4.4	Impact of Political Candidate Views on Vote . . . . .	12
4.5	Rights of Transgender People . . . . .	15
4.6	Rights of Transgender People in Schools . . . . .	18
<b>5</b>	<b>Extended Demographics</b>	<b>20</b>
5.7	LGBTIQ Identification . . . . .	21
5.8	Vote Status . . . . .	24

# 1. Methodology

## Data Collection

This study was conducted via touch-tone response automated phone survey conducted 19-21 April 2022. Surveys are conducted between 17:30 - 20:20 weekdays and 10:00 - 17:30 Saturdays at the local time of respondents so as to not over-sample nonworkers and stay-at-homes.

The study was conducted among a sample of n=914 people aged 18 years and over from a population of 103,567. Telephone numbers were licensed from a commercial provider and include both landline and mobile phone numbers. In this survey 57.7% of respondents were reached via mobile phone.

## Weighting

Following the completion of the surveys, the data was cell-weighted by gender and age to reflect local population proportions.

The effective sample size following weighting is 516 meaning the effective margin of error is +/-4.3%.

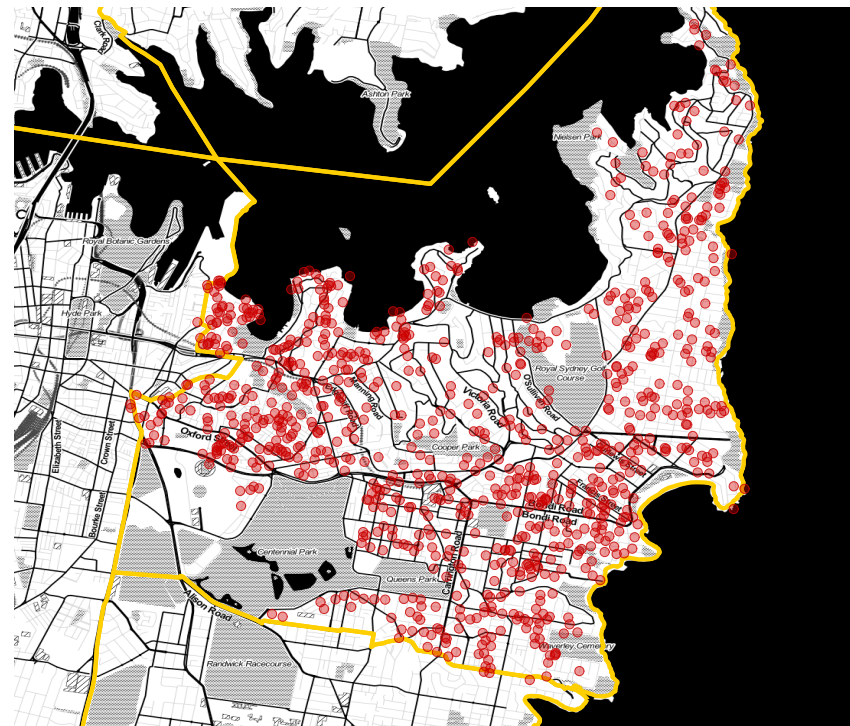
For further information or clarification about the methodology of this survey contact:

Kos Samaras

+61407047898

samarask@redbridgegroup.com.au

## Respondent Geography

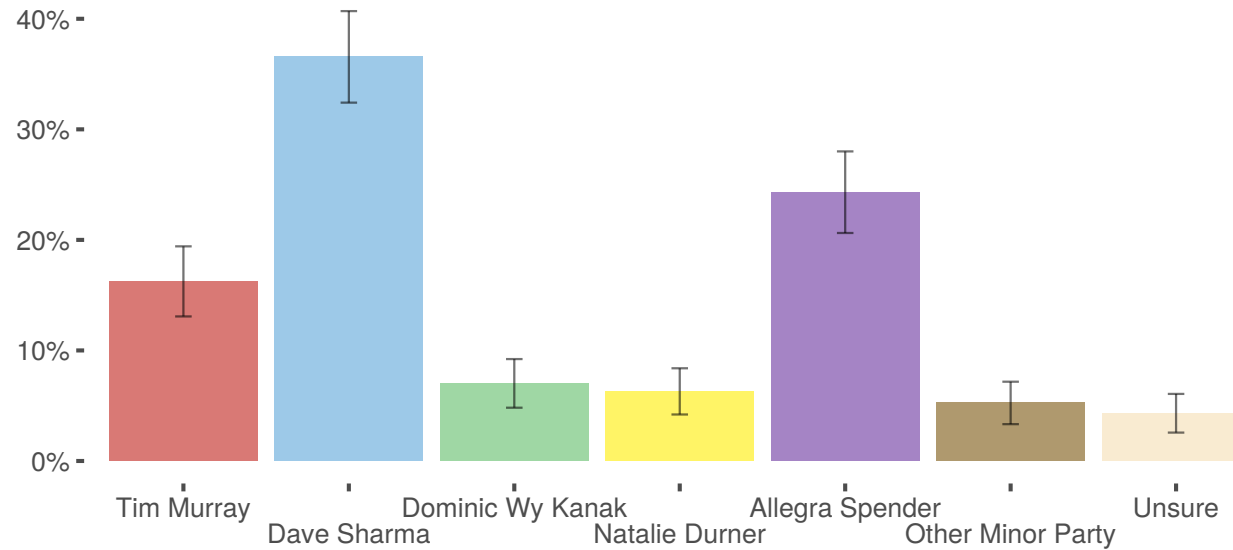


Map tiles by Stamen Design (stamen.com) under creativecommons.org CC BY 3.0. Data © OpenStreetMap.org contributors under opendatacommons.org ODbL

## 2. Voting Intentions

## 2.1 Vote Intention

If a Federal election was held today, which of the following would receive your first preference vote?



	Tim Murray From The Labor Party	Dave Sharma From The Liberals	Dominic Wy Kanak From The Greens	Natalie Durner From The United Australia Party	Independent Allegra Spender	A Candidate From Another Minor Party	Unsure
<b>All Respondents</b>	<b>16.2%</b>	<b>36.6%</b>	<b>7.0%</b>	<b>6.3%</b>	<b>24.3%</b>	<b>5.3%</b>	<b>4.3%</b>
Redistributed	17%	38%	7%	7%	25%	5%	
<b>Gender</b>							
Female	16%	36%	9%	5%	25%	3%	5%
Male	17%	37%	5%	7%	24%	7%	3%
<b>Age</b>							
18 - 39	16%	37%	10%	10%	17%	6%	4%
40 - 59	18%	30%	6%	6%	31%	5%	5%
60 +	15%	43%	5%	3%	26%	5%	4%

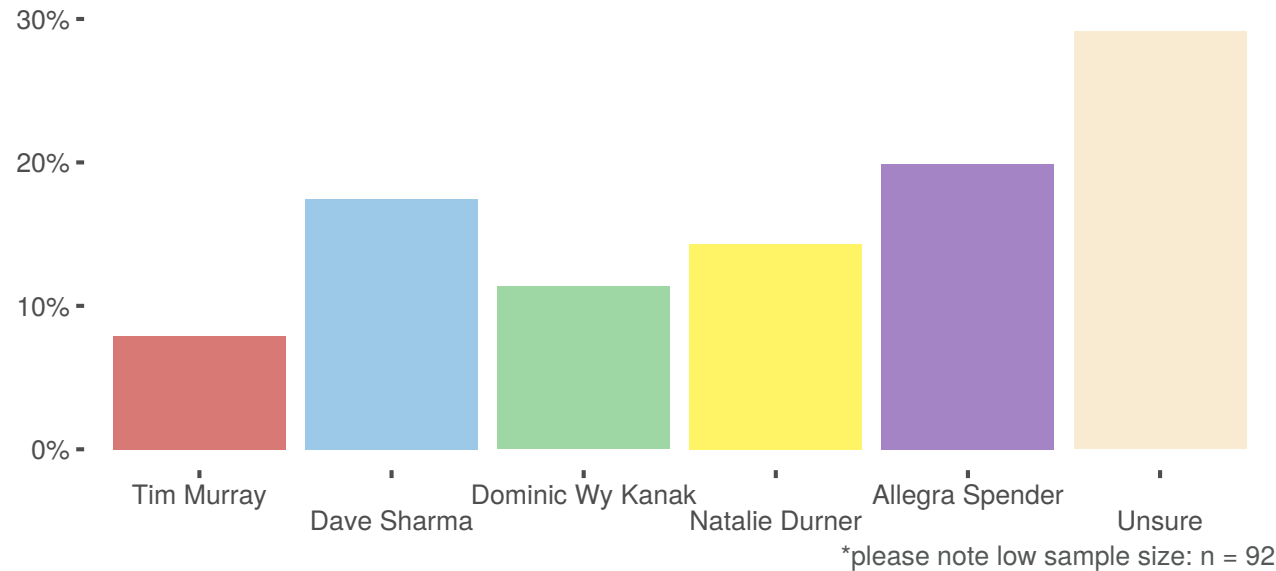
## Vote Intention - Details

If a Federal election was held today, which of the following would receive your first preference vote?

	Tim Murray From The Labor Party	Dave Sharma From The Liberals	Dominic Wy Kanak From The Greens	Natalie Dumer From The United Australia Party	Independent Allegra Spender	A Candidate From Another Minor Party	Unsure
<b>All Respondents</b>	<b>16.2%</b>	<b>36.6%</b>	<b>7.0%</b>	<b>6.3%</b>	<b>24.3%</b>	<b>5.3%</b>	<b>4.3%</b>
Redistributed	17%	38%	7%	7%	25%	5%	
<b>Education</b>							
Less than Year 12	22%	9%	35%	27%			8%
High School	12%	48%	4%	11%	17%	6%	3%
TAFE Or Vocational Training	17%	34%	5%	4%	25%	13%	2%
University Degree	16%	33%	7%	6%	29%	3%	5%
<b>Income</b>							
Less than \$50,000	21%	43%	3%	8%	18%	3%	4%
Up to \$80,000	19%	31%	13%	5%	22%	3%	6%
Up to \$120,000	14%	38%	8%	6%	23%	6%	5%
More than \$120,000	13%	30%	5%	8%	33%	7%	3%
<b>LGBTIQ Identification</b>							
Yes	12%	23%	7%	19%	33%	4%	1%
No	17%	34%	7%	6%	26%	5%	5%
Unsure	2%	66%		8%	13%	6%	4%
<b>Vote Determining Issues</b>							
Migration And Refugee Issues	12%	20%	15%	6%	35%	2%	10%
National Security And Defence	5%	69%	2%	8%	6%	3%	7%
Transgender Participation In Womens Sports	14%	14%		44%	23%		5%
Healthcare And Aged Care	25%	29%	6%	5%	22%	8%	5%
LGBTIQ+ Equality	12%	44%	4%	4%	31%	4%	
Economy	5%	71%	1%	5%	8%	4%	6%
Cost Of Living	16%	29%	14%	19%	15%	7%	1%
Education	38%	15%	15%		14%	12%	6%
Climate Change	26%	7%	10%	1%	48%	7%	2%

## 2.2 Lean of Unsure or Another Minor Party Voters

If you had to choose, to which of the following do you have even a slight leaning?



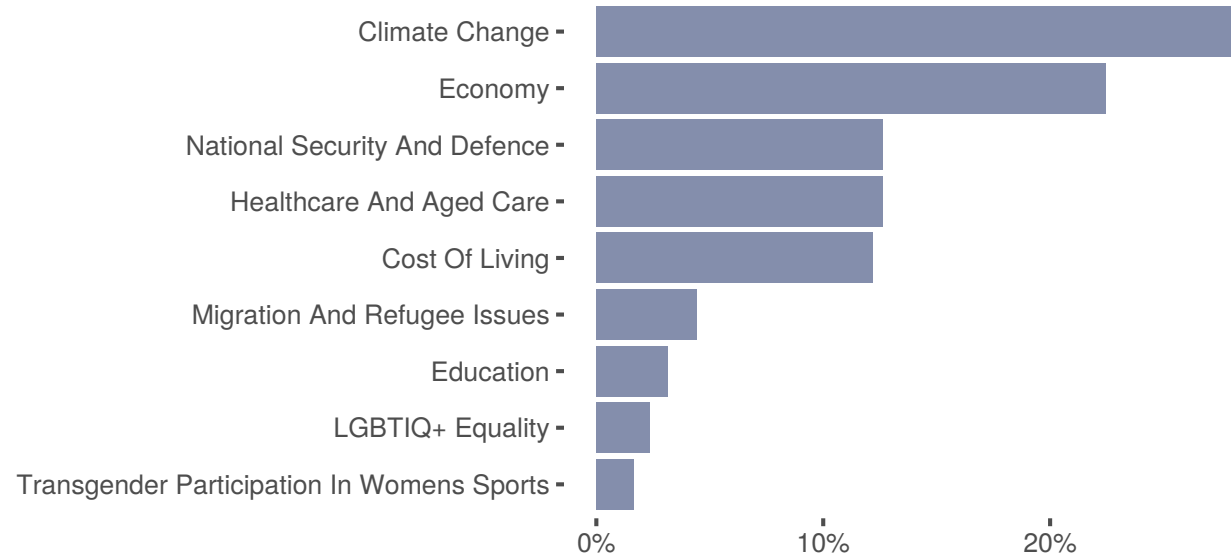
	Tim Murray From The Labor Party	Dave Sharma From The Liberals	Dominic Wy Kanak From The Greens	Natalie Durner From The United Australia Party	Independent Allegra Spender	Unsure
<b>All Respondents</b>	<b>7.9%</b>	<b>17.4%</b>	<b>11.3%</b>	<b>14.3%</b>	<b>19.9%</b>	<b>29.1%</b>
Redistributed	11%	25%	16%	20%	28%	

### 3. Important Issues



### 3.3 Vote Determining Issues

Which of the following issues is most important to you when deciding how to vote in the upcoming federal election?



	Climate Change	The Economy	National Security And Defence	Healthcare And Aged Care	Cost Of Living	Migration And Refugee Issues	Education	LGBTIQ+ Equality	Transgender Participation In Womens Sports
<b>All Respondents</b>	<b>28.5%</b>	<b>22.5%</b>	<b>12.6%</b>	<b>12.6%</b>	<b>12.2%</b>	<b>4.4%</b>	<b>3.2%</b>	<b>2.3%</b>	<b>1.7%</b>
<b>Gender</b>									
Female	30%	17%	14%	14%	11%	5%	4%	3%	1%
Male	27%	29%	11%	11%	13%	3%	2%	2%	2%
<b>Age</b>									
18 - 39	24%	25%	14%	9%	13%	5%	3%	4%	2%
40 - 59	32%	19%	8%	14%	17%	3%	4%	1%	2%
60 +	29%	23%	17%	15%	5%	5%	3%	2%	1%

## Vote Determining Issues - Details

Which of the following issues is most important to you when deciding how to vote in the upcoming federal election?

	Climate Change	The Economy	National Security And Defence	Healthcare And Aged Care	Cost Of Living	Migration And Refugee Issues	Education	LGBTIQ+ Equality	Transgender Participation In Womens Sports
<b>All Respondents</b>	<b>28.5%</b>	<b>22.5%</b>	<b>12.6%</b>	<b>12.6%</b>	<b>12.2%</b>	<b>4.4%</b>	<b>3.2%</b>	<b>2.3%</b>	<b>1.7%</b>
<b>Education</b>									
Less than Year 12	4%	25%	5%	15%	20%	16%			15%
High School	20%	24%	13%	17%	17%		5%	5%	
TAFE Or Vocational Training	30%	17%	12%	16%	10%	4%	4%	5%	2%
University Degree	33%	22%	12%	10%	11%	5%	4%	1%	1%
<b>Income</b>									
Less than \$50,000	26%	14%	17%	13%	14%	8%	2%	6%	
Up to \$80,000	28%	17%	19%	15%	10%	6%	4%	2%	
Up to \$120,000	41%	22%	11%	9%	11%	1%	5%		
More than \$120,000	28%	27%	7%	11%	13%	3%	5%	1%	4%
<b>Vote Intention</b>									
Tim Murray	45%	7%	4%	19%	12%	3%	7%	2%	1%
Dave Sharma	5%	44%	24%	10%	10%	2%	1%	3%	1%
Dominic Wy Kanak	41%	4%	4%	11%	23%	9%	7%	1%	
Natalie Durner	4%	17%	16%	10%	36%	4%		2%	11%
Allegra Spender	57%	7%	3%	12%	8%	6%	2%	3%	2%
Other Minor Party	34%	17%	8%	18%	14%	2%	7%	2%	
Unsure	11%	34%	20%	14%	4%	11%	5%		2%
<b>LGBTIQ Identification</b>									
Unsure	17%	12%	15%	17%	8%	13%	2%	8%	8%
Yes	33%	8%	11%	8%	21%	5%		13%	
No	30%	24%	12%	12%	12%	4%	5%	1%	1%

## Vote Determining Issues - Details continued

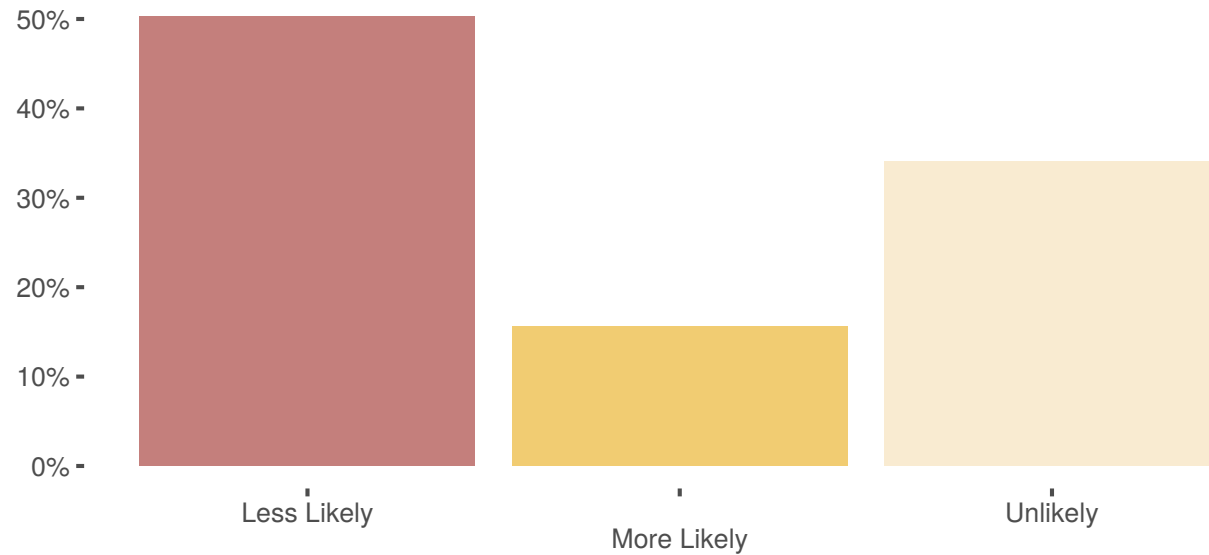
Which of the following issues is most important to you when deciding how to vote in the upcoming federal election?

	Climate Change	The Economy	National Security And Defence	Healthcare And Aged Care	Cost Of Living	Migration And Refugee Issues	Education	LGBTIQ+ Equality	Transgender Participation In Womens Sports
<b>All Respondents</b>	<b>28.5%</b>	<b>22.5%</b>	<b>12.6%</b>	<b>12.6%</b>	<b>12.2%</b>	<b>4.4%</b>	<b>3.2%</b>	<b>2.3%</b>	<b>1.7%</b>
<b>Rights of Transgender People in Schools</b>									
Unsure	7%	27%	24%	14%	19%	4%	2%	4%	
Strongly Disagree	13%	27%	26%		6%	12%	9%		7%
Disagree	4%	31%	16%	18%	19%	8%	5%		
Agree	9%	51%	11%	8%	15%	3%	2%		2%
Strongly Agree	45%	15%	6%	13%	10%	4%	3%	3%	1%

## 4. LGBTQ+ Rights

## 4.4 Impact of Political Candidate Views on Vote

Would you be more or less likely to vote for a candidate who expressed views critical of gay, lesbian, bisexual and transgender Australians?



	Less Likely	More Likely	Unlikely To Change My Vote
<b>All Respondents</b>	<b>50.3%</b>	<b>15.7%</b>	<b>34.0%</b>
<b>Gender</b>			
Female	50%	18%	32%
Male	50%	13%	36%
<b>Age</b>			
18 - 39	42%	22%	36%
40 - 59	61%	13%	27%
60 +	47%	12%	41%

## Impact of Political Candidate Views on Vote - Details

Would you be more or less likely to vote for a candidate who expressed views critical of gay, lesbian, bisexual and transgender Australians?

	Less Likely	More Likely	Unlikely To Change My Vote
<b>All Respondents</b>	<b>50.3%</b>	<b>15.7%</b>	<b>34.0%</b>
<b>Education</b>			
Less than Year 12	43%	16%	41%
High School	41%	18%	40%
TAFE Or Vocational Training	62%	17%	21%
University Degree	52%	15%	33%
<b>Income</b>			
Less than \$50,000	48%	24%	28%
Up to \$80,000	47%	19%	34%
Up to \$120,000	55%	9%	36%
More than \$120,000	55%	12%	33%
<b>Vote Intention</b>			
Tim Murray	64%	14%	22%
Dave Sharma	38%	10%	53%
Dominic Wy Kanak	51%	20%	30%
Natalie Durner	25%	24%	50%
Allegra Spender	71%	16%	13%
Other Minor Party	46%	31%	24%
Unsure	24%	32%	43%
<b>LGBTIQ Identification</b>			
Yes	41%	34%	25%
No	53%	14%	33%
Unsure	47%	17%	36%

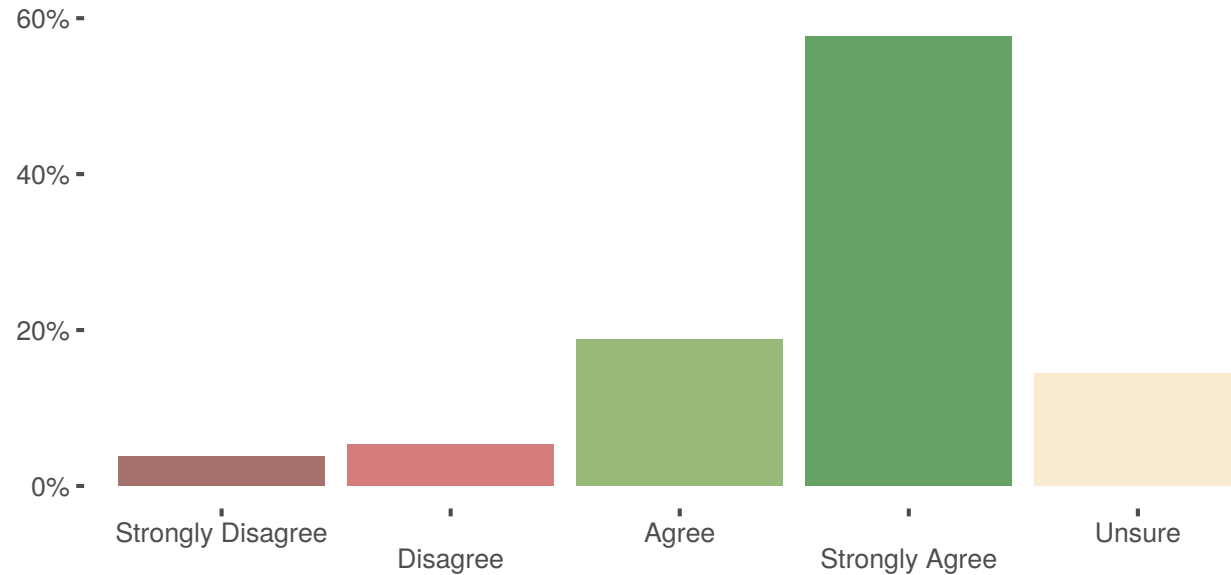
# Impact of Political Candidate Views on Vote - Details continued

Would you be more or less likely to vote for a candidate who expressed views critical of gay, lesbian, bisexual and transgender Australians?

	Less Likely	More Likely	Unlikely To Change My Vote
All Respondents	50.3%	15.7%	34.0%
Rights of Transgender People in Schools			
Strongly Disagree	40%	25%	35%
Disagree	31%	20%	49%
Agree	38%	14%	47%
Strongly Agree	63%	16%	20%
Unsure	26%	5%	69%

## 4.5 Rights of Transgender People

To what extent do you agree that trans people deserve the same rights and protections as other Australians?



	Strongly Disagree	Disagree	Agree	Strongly Agree	Unsure
<b>All Respondents</b>	<b>3.8%</b>	<b>5.3%</b>	<b>18.8%</b>	<b>57.7%</b>	<b>14.4%</b>
Redistributed	4%	6%	22%	67%	
<b>Gender</b>					
Female	3%	5%	17%	60%	15%
Male	4%	6%	21%	55%	14%
<b>Age</b>					
18 - 39	6%	8%	16%	54%	16%
40 - 59	1%	4%	18%	63%	13%
60 +	4%	4%	22%	55%	14%



## Rights of Transgender People - Details

To what extent do you agree that trans people deserve the same rights and protections as other Australians?

	Strongly Disagree	Disagree	Agree	Strongly Agree	Unsure
<b>All Respondents</b>	<b>3.8%</b>	<b>5.3%</b>	<b>18.8%</b>	<b>57.7%</b>	<b>14.4%</b>
Redistributed	4%	6%	22%	67%	
<b>Education</b>					
Less than Year 12	15%	12%	4%	65%	4%
High School	6%	9%	26%	46%	13%
TAFE Or Vocational Training	2%	7%	21%	53%	16%
University Degree	3%	4%	16%	62%	14%
<b>Income</b>					
Less than \$50,000	5%	14%	16%	51%	14%
Up to \$80,000	2%	4%	22%	54%	18%
Up to \$120,000	1%	3%	14%	69%	13%
More than \$120,000	5%	3%	19%	60%	12%
<b>Vote Intention</b>					
Tim Murray	2%	2%	7%	80%	8%
Dave Sharma	4%	10%	28%	34%	25%
Dominic Wy Kanak			21%	72%	7%
Natalie Durner	18%	6%	23%	23%	31%
Allegra Spender	1%		12%	85%	2%
Other Minor Party	9%	11%	16%	53%	10%
Unsure	5%	6%	18%	61%	10%
<b>LGBTIQ Identification</b>					
Yes	8%	4%	5%	76%	8%
No	2%	6%	20%	57%	15%
Unsure	8%	12%	6%	55%	19%

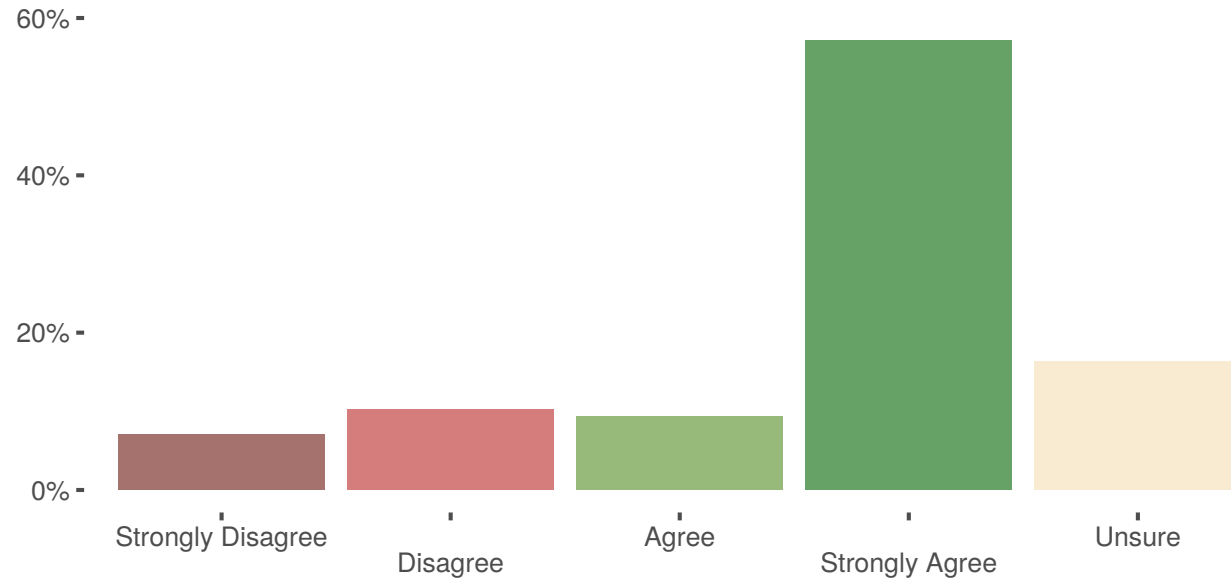
## Rights of Transgender People - Details continued

To what extent do you agree that trans people deserve the same rights and protections as other Australians?

	Strongly Disagree	Disagree	Agree	Strongly Agree	Unsure
<b>All Respondents</b>	<b>3.8%</b>	<b>5.3%</b>	<b>18.8%</b>	<b>57.7%</b>	<b>14.4%</b>
Redistributed	4%	6%	22%	67%	
<b>Rights of Transgender People in Schools</b>					
Strongly Disagree	18%	16%	9%	54%	4%
Disagree	12%	25%	33%	12%	19%
Agree	4%	2%	37%	28%	28%
Strongly Agree	1%	1%	11%	84%	4%
Unsure	4%	7%	28%	18%	43%

## 4.6 Rights of Transgender People in Schools

To what extent do you agree that religious schools should not be able to fire someone or expel a student for being transgender.



	Strongly Disagree	Disagree	Agree	Strongly Agree	Unsure
<b>All Respondents</b>	<b>7.0%</b>	<b>10.2%</b>	<b>9.3%</b>	<b>57.2%</b>	<b>16.3%</b>
Redistributed	8%	12%	11%	68%	
<b>Gender</b>					
Female	5%	9%	9%	62%	15%
Male	9%	11%	10%	53%	18%
<b>Age</b>					
18 - 39	10%	14%	5%	54%	17%
40 - 59	6%	8%	10%	62%	13%
60 +	5%	9%	13%	54%	19%

## Rights of Transgender People in Schools - Details

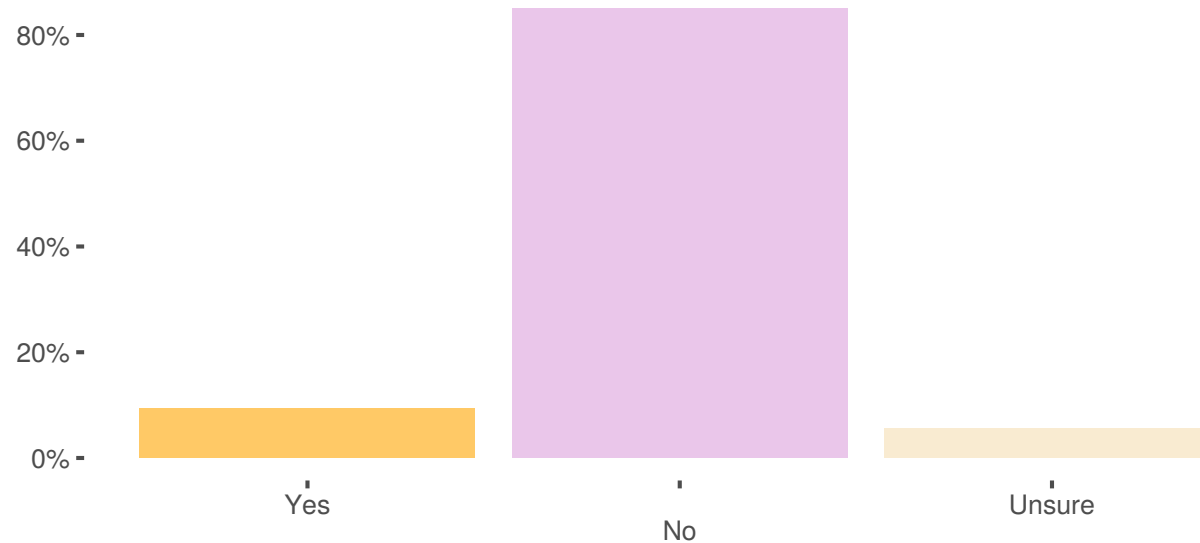
To what extent do you agree that religious schools should not be able to fire someone or expel a student for being transgender.

	Strongly Disagree	Disagree	Agree	Strongly Agree	Unsure
<b>All Respondents</b>	<b>7.0%</b>	<b>10.2%</b>	<b>9.3%</b>	<b>57.2%</b>	<b>16.3%</b>
Redistributed	8%	12%	11%	68%	
<b>Education</b>					
Less than Year 12	15%	4%	9%	56%	17%
High School	3%	22%	10%	48%	17%
TAFE Or Vocational Training	4%	5%	12%	58%	21%
University Degree	7%	8%	9%	61%	15%
<b>Income</b>					
Less than \$50,000	6%	17%	11%	54%	13%
Up to \$80,000	5%	8%	7%	57%	23%
Up to \$120,000	3%	7%	9%	65%	15%
More than \$120,000	9%	8%	10%	58%	15%
<b>Vote Intention</b>					
Tim Murray	3%	8%	3%	74%	12%
Dave Sharma	9%	14%	14%	36%	27%
Dominic Wy Kanak		4%	14%	76%	6%
Natalie Durner	8%	16%	17%	22%	36%
Allegra Spender	4%	6%	6%	80%	5%
Other Minor Party	25%	11%		57%	7%
Unsure	10%	14%	3%	61%	13%
<b>LGBTIQ Identification</b>					
Yes		13%	1%	71%	15%
No	6%	9%	11%	59%	16%
Unsure	27%	8%	9%	38%	18%

## 5. Extended Demographics

## 5.7 LGBTIQ Identification

Are you a member of the LGBTIQ community?



	Yes	No	Unsure
<b>All Respondents</b>	<b>9.4%</b>	<b>85.1%</b>	<b>5.5%</b>
Redistributed	10%	90%	
<b>Gender</b>			
Female	7%	86%	7%
Male	12%	84%	4%
<b>Age</b>			
18 - 39	15%	74%	10%
40 - 59	7%	89%	4%
60 +	7%	90%	3%

## LGBTIQ Identification - Details

Are you a member of the LGBTIQ community?

	Yes	No	Unsure
<b>All Respondents</b>	<b>9.4%</b>	<b>85.1%</b>	<b>5.5%</b>
Redistributed	10%	90%	
<b>Education</b>			
Less than Year 12	28%	57%	15%
High School	19%	72%	9%
TAFE Or Vocational Training	4%	87%	9%
University Degree	8%	89%	3%
<b>Income</b>			
Less than \$50,000	17%	70%	13%
Up to \$80,000	7%	91%	2%
Up to \$120,000	7%	89%	4%
More than \$120,000	8%	88%	4%
<b>Vote Intention</b>			
Tim Murray	7%	92%	1%
Dave Sharma	6%	83%	11%
Dominic Wy Kanak	9%	91%	
Natalie Durner	25%	69%	6%
Allegra Spender	12%	85%	3%
Other Minor Party	8%	86%	7%
Unsure	3%	92%	5%
<b>Influence of LGBTQ Support on Vote</b>			
Less Likely	10%	84%	6%
More Likely	17%	80%	3%
Unlikely	2%	90%	8%

# LGBTIQ Identification - Details continued

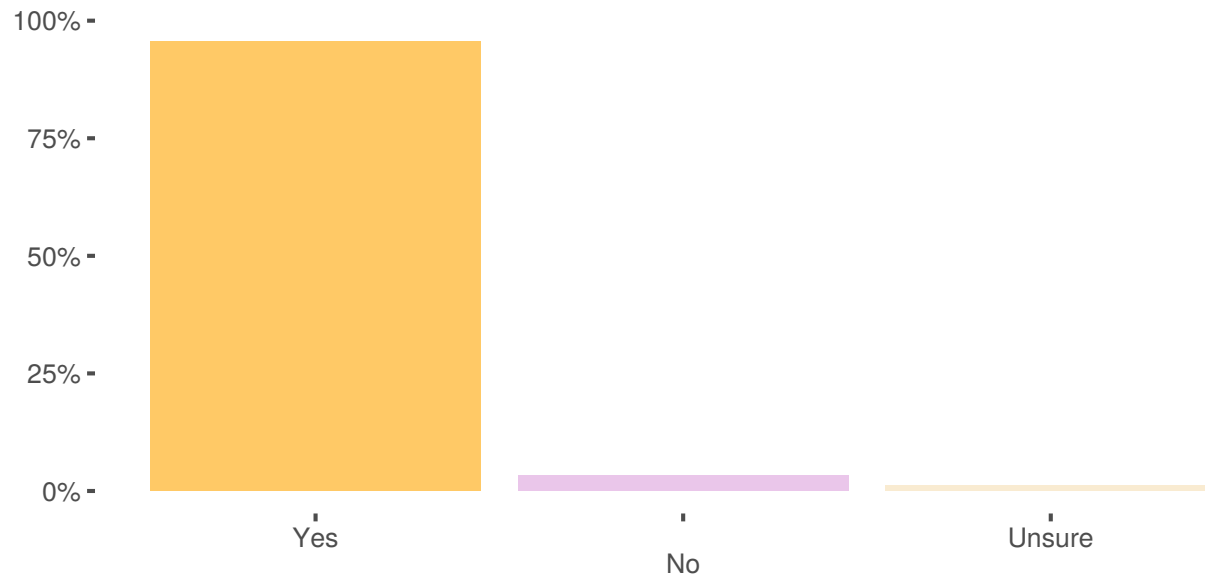
Are you a member of the LGBTIQ community?

	Yes	No	Unsure
<b>All Respondents</b>	<b>9.4%</b>	<b>85.1%</b>	<b>5.5%</b>
Redistributed	10%	90%	
<b>Rights of Transgender People in Schools</b>			
Strongly Disagree		76%	24%
Disagree	13%	82%	5%
Agree	1%	94%	5%
Strongly Agree	11%	85%	4%
Unsure	9%	85%	6%



## 5.8 Vote Status

Are you an Australian citizen or eligible to vote in Australian elections?



	Yes	No	Unsure
<b>All Respondents</b>	<b>95.7%</b>	<b>3.3%</b>	<b>1.1%</b>
Redistributed	97%	3%	
<b>Vote Intention</b>			
Tim Murray	98%		2%
Dave Sharma	95%	4%	1%
Dominic Wy Kanak	95%	5%	
Natalie Durner	100%		
Allegra Spender	95%	3%	2%
Other Minor Party	95%	5%	
Unsure	91%	9%	